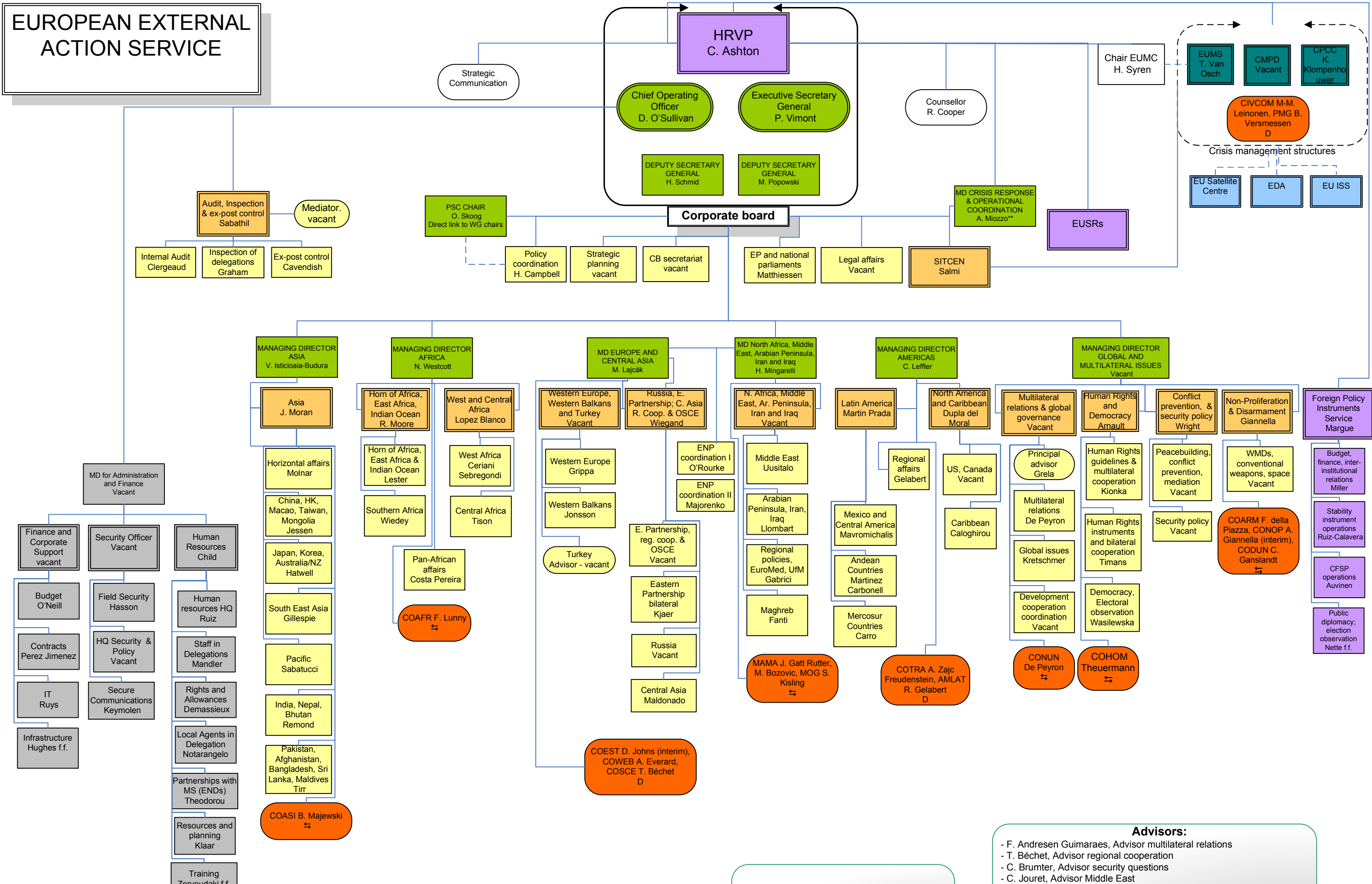


EUROPEAN EXTERNAL ACTION SERVICE



**The Managing Director for Crisis Response will be invited to attend Corporate Board meetings as necessary

- PURPLE: reporting directly to the HR
- GREEN: Corporate and Policy Boards
- ORANGE: Working Group Chairs
- BLUE: CFSP Agencies
- DARK BLUE: Crisis management structures

- Advisors:**
- F. Andresen Guimaraes, Advisor multilateral relations
 - T. Béchet, Advisor regional cooperation
 - C. Brumter, Advisor security questions
 - C. Jouret, Advisor Middle East
 - B. Majewski, Advisor, COASI Chair
 - A. Olljum, Advisor
 - T. Roe, Advisor ASEM
 - A. van der Spree, Advisor ICS
 - P. Willaert, Advisor external relations and inspection of EU Delegations
 - S. Zervoudaki, Advisor training