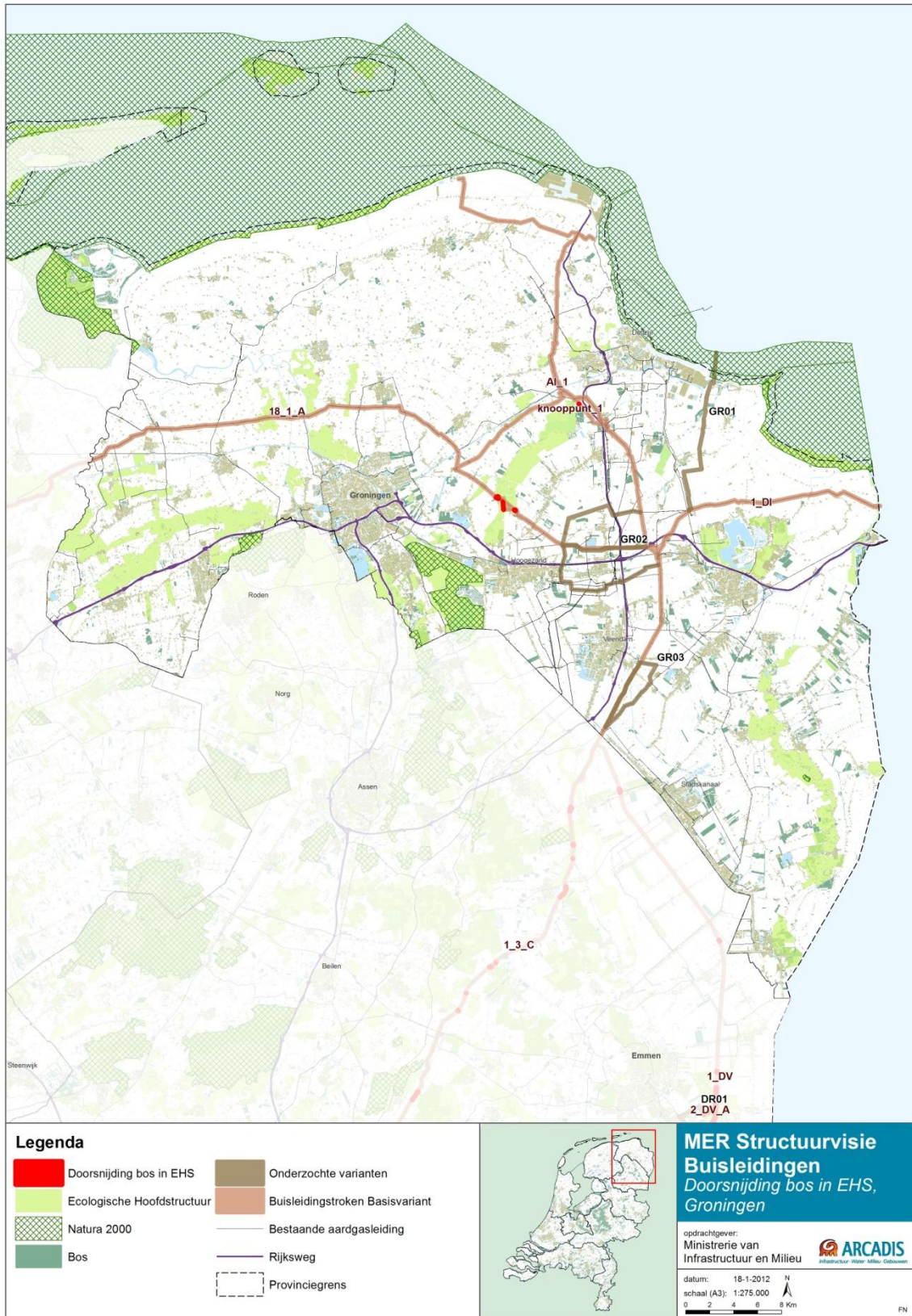


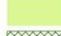





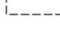


Bijlage 3 EHS-kaarten per provincie





Legenda

- | | | | |
|---|----------------------------|---|---------------------------------|
|  | Doorsnijding bos in EHS |  | Onderzochte varianten |
|  | Ecologische Hoofdstructuur |  | Buisleidingstroken Basisvariant |
|  | Natura 2000 |  | Bestaande aardgasleiding |
|  | Bos |  | Rijksweg |
| | |  | Provinciegrens |



**MER Structuurvisie
Buisleidingen**
*Doorsnijding bos in EHS,
Friesland*

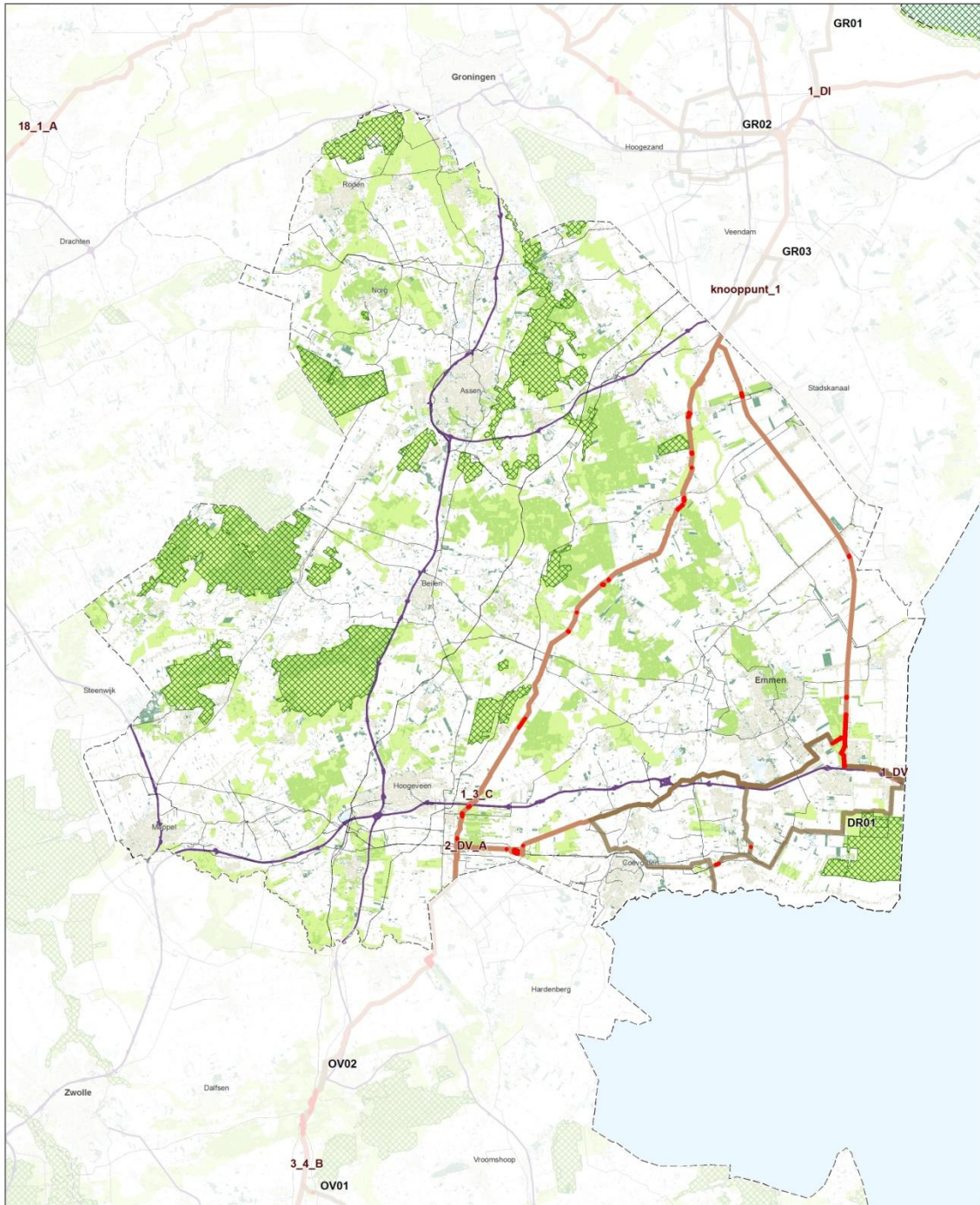
opdrachtgever:
Ministerie van
Infrastructuur en Milieu

 **ARCADIS**
Infrastructuur Water Milieu Gebouwen


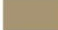







datum: 18-1-2012
schaal (A3): 1:275.000

 0 2 4 6 8 Km

FN



Legenda

- | | | | |
|---|----------------------------|---|---------------------------------|
|  | Doorsnijding bos in EHS |  | Onderzochte varianten |
|  | Natura 2000 |  | Buisleidingstroken Basisvariant |
|  | Ecologische Hoofdstructuur |  | Bestaande aardgasleiding |
|  | Bos |  | Rijksweg |
| | |  | Provinciegrens |



**MER Structuurvisie
Buisleidingen**
*Doorsnijding bos in EHS,
Drenthe*

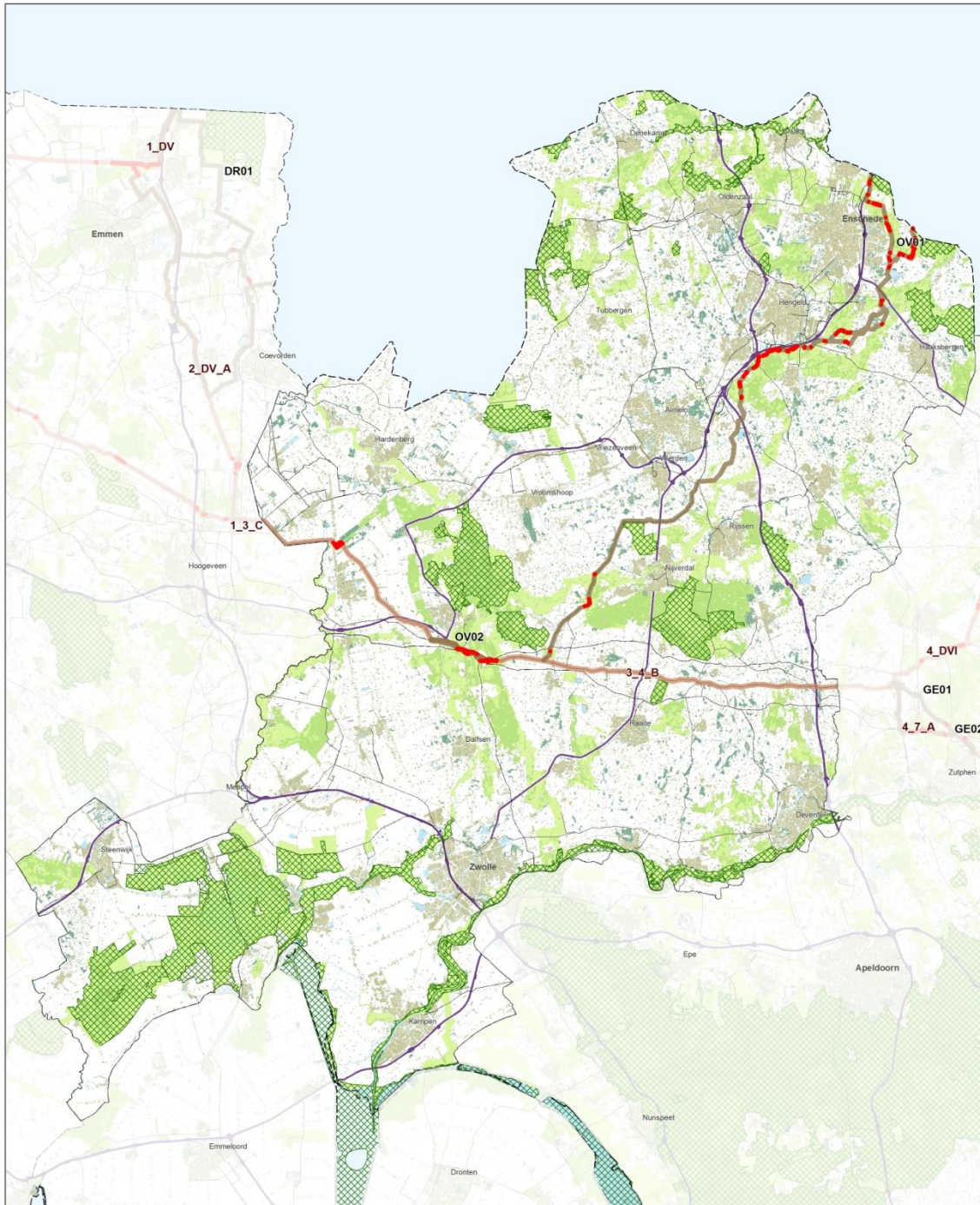
opdrachtgever:
Ministerie van
Infrastructuur en Milieu


Infrastructuur Water Milieu Cebocouren



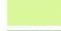






datum: 18-1-2012
schaal (A3): 1:275 000



FN



Legenda

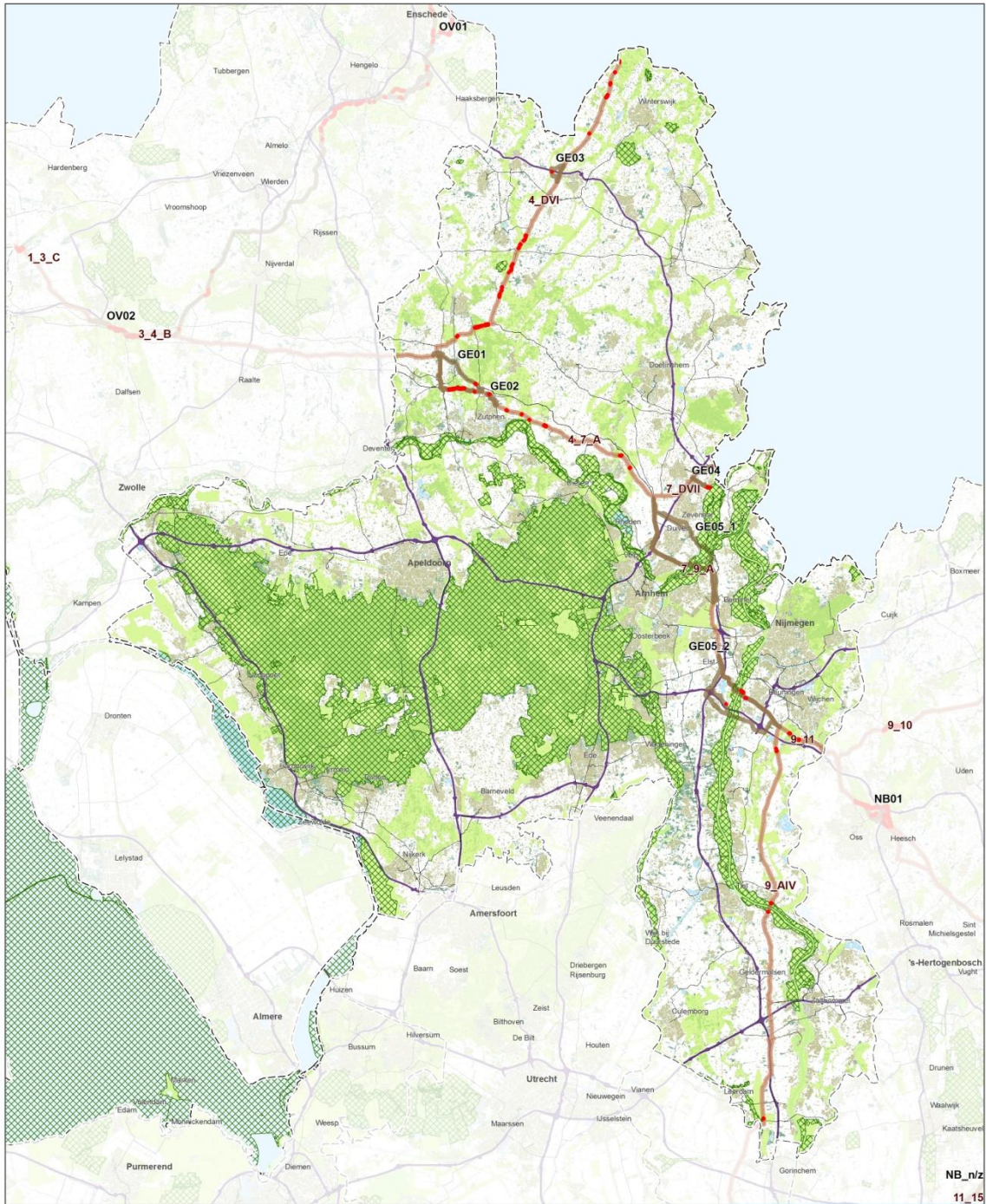
- | | | | |
|---|----------------------------|---|---------------------------------|
|  | Doorsnijding bos in EHS |  | Onderzochte varianten |
|  | Ecologische Hoofdstructuur |  | Buisleidingstroken Basisvariant |
|  | Natura 2000 |  | Bestaande aardgasleiding |
|  | Bos |  | Rijksweg |
| | |  | Provinciegrens |





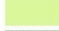






MER Structuurvisie
Buisleidingen
Doorsnijding bos in EHS, Overijssel

opdrachtgever:
 Ministerie van
 Infrastructuur en Milieu 
 Infrastructuur Water Milieu Gebouwen

datum: 23-1-2012
 schaal (A3): 1:300 000 
 0 2 4 6 8 Km FN



Legenda

	Doorsnijding bos in EHS		Onderzochte varianten
	Ecologische Hoofdstructuur		Buisleidingstroken Basisvariant
	Natura 2000		Bestaande aardgasleiding
	Bos		Rijksweg
			Provinciegrens



MER Structuurvisie
Buisleidingen
Doorsnijding bos in EHS, Gelderland

opdrachtgever:
 Ministerie van
 Infrastructuur en Milieu


 Infrastructuur Water Milieu Cobouwen



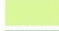






datum: 18-1-2012
 schaal (A3): 1:400 000

0 2 4 6 8 Km

FN



Legenda

- | | | | |
|---|----------------------------|---|---------------------------------|
|  | Doorsnijding bos in EHS |  | Onderzochte varianten |
|  | Ecologische Hoofdstructuur |  | Buisleidingstroken Basisvariant |
|  | Natura 2000 |  | Bestaande aardgasleiding |
|  | Bos |  | Rijksweg |
| | |  | Provinciegrens |



**MER Structuurvisie
Buisleidingen**
*Doorsnijding bos in EHS,
Noord-Holland*

opdrachtgever:
Ministerie van
Infrastructuur en Milieu


Infrastructuur Water Milieu Gebouwen



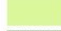






datum: 23-1-2012
schaal (A3): 1:250 000

 N
 0 2 4 6 8 Km

FN



Legenda

- | | | | |
|---|----------------------------|---|---------------------------------|
|  | Doorsnijding bos in EHS |  | Onderzochte varianten |
|  | Ecologische Hoofdstructuur |  | Buisleidingstroken Basisvariant |
|  | Natura 2000 |  | Bestaande aardgasleiding |
|  | Bos |  | Rijksweg |
| | |  | Provinciegrens |



**MER Structuurvisie
Buisleidingen**
*Doorsnijding bos in EHS,
Zuid-Holland*

opdrachtgever:
Ministerie van
Infrastructuur en Milieu

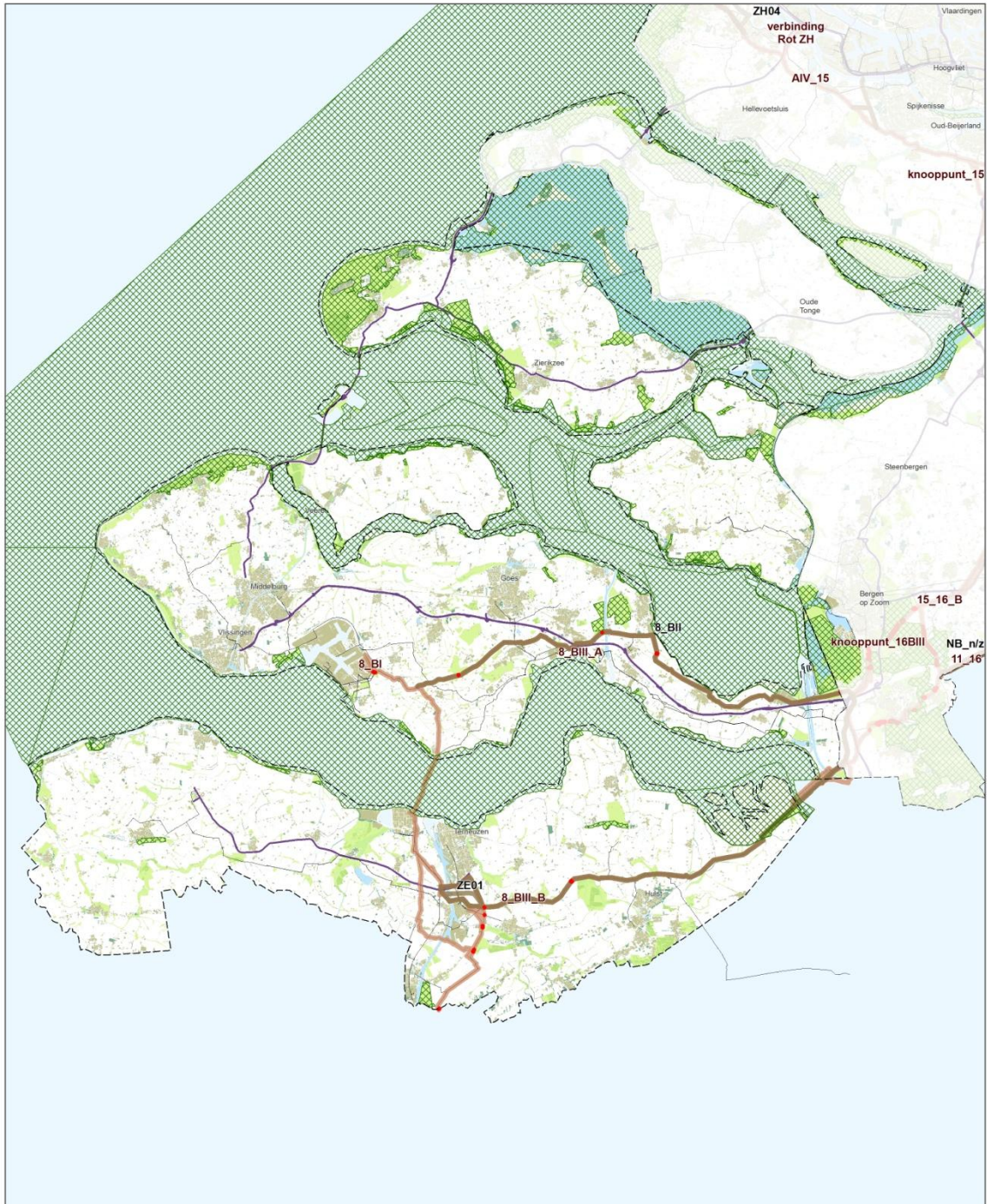
 **ARCADIS**
Infrastructuur Water Milieu Gebouwen

datum: 23-1-2012
schaal (A3): 1:275 000



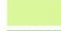






0 2 4 6 8 Km

N

FN



Legenda

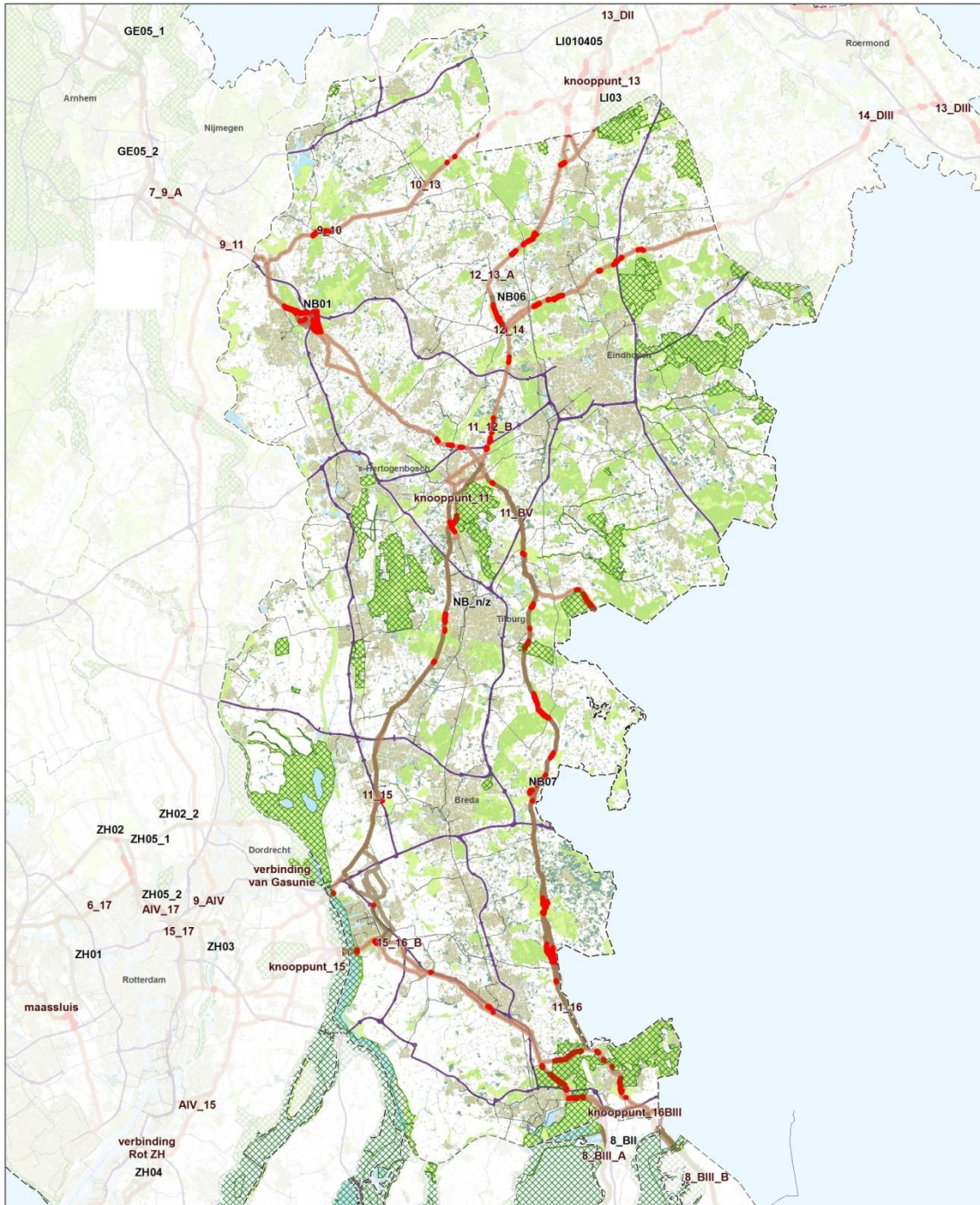
- | | | | |
|---|----------------------------|---|---------------------------------|
|  | Doorsnijding bos in EHS |  | Onderzochte varianten |
|  | Ecologische Hoofdstructuur |  | Buisleidingstroken Basisvariant |
|  | Natura 2000 |  | Bestaande aardgasleiding |
|  | Bos |  | Rijksweg |
| | |  | Provinciegrens |





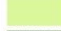






MER Structuurvisie
Buisleidingen
Doorsnijding bos in EHS, Zeeland

opdrachtgever:
 Ministerie van
 Infrastructuur en Milieu 
 Infrastructuur Water Milieu Cobouw

datum: 23-1-2012
 schaal (A3): 1:275 000
 8 Km
 FN



Legenda

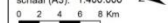
- | | | | |
|---|----------------------------|---|---------------------------------|
|  | Doorsnijding bos in EHS |  | Onderzochte varianten |
|  | Ecologische Hoofdstructuur |  | Buisleidingstroken Basisvariant |
|  | Natura 2000 |  | Bestaande aardgasleiding |
|  | Bos |  | Rijksweg |
| | |  | Provinciegrens |

**MER Structuurvisie
Buisleidingen**
*Doorsnijding bos in EHS,
Noord-Brabant*

opdrachtgever:
Ministerie van
Infrastructuur en Milieu





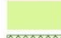






datum: 18-1-2012
schaal (A3): 1:400 000



FN



Legenda

	Doorsnijding bos in EHS		Onderzochte varianten
	Ecologische Hoofdstructuur		Buisleidingstroken Basisvariant
	Natura 2000		Bestaande aardgasleiding
	Bos		Rijksweg
			Provinciegrens



MER Structuurvisie Buisleidingen
Doorsnijding bos in EHS, Limburg

opdrachtgever:
 Ministerie van Infrastructuur en Milieu

 **ARCADIS**
 Infrastructuur Water Milieu Gebouwen

datum: 18-1-2012
 schaal (A3): 1:275.000

 0 2 4 6 8 Km

 N

FN