



Rijksinstituut voor Volksgezondheid
en Milieu
*Ministerie van Volksgezondheid,
Welzijn en Sport*

COVID-19

Tweede Kamer – briefing
22 april 2021
mobility data

Jaap van Dissel & Cib-RIVM

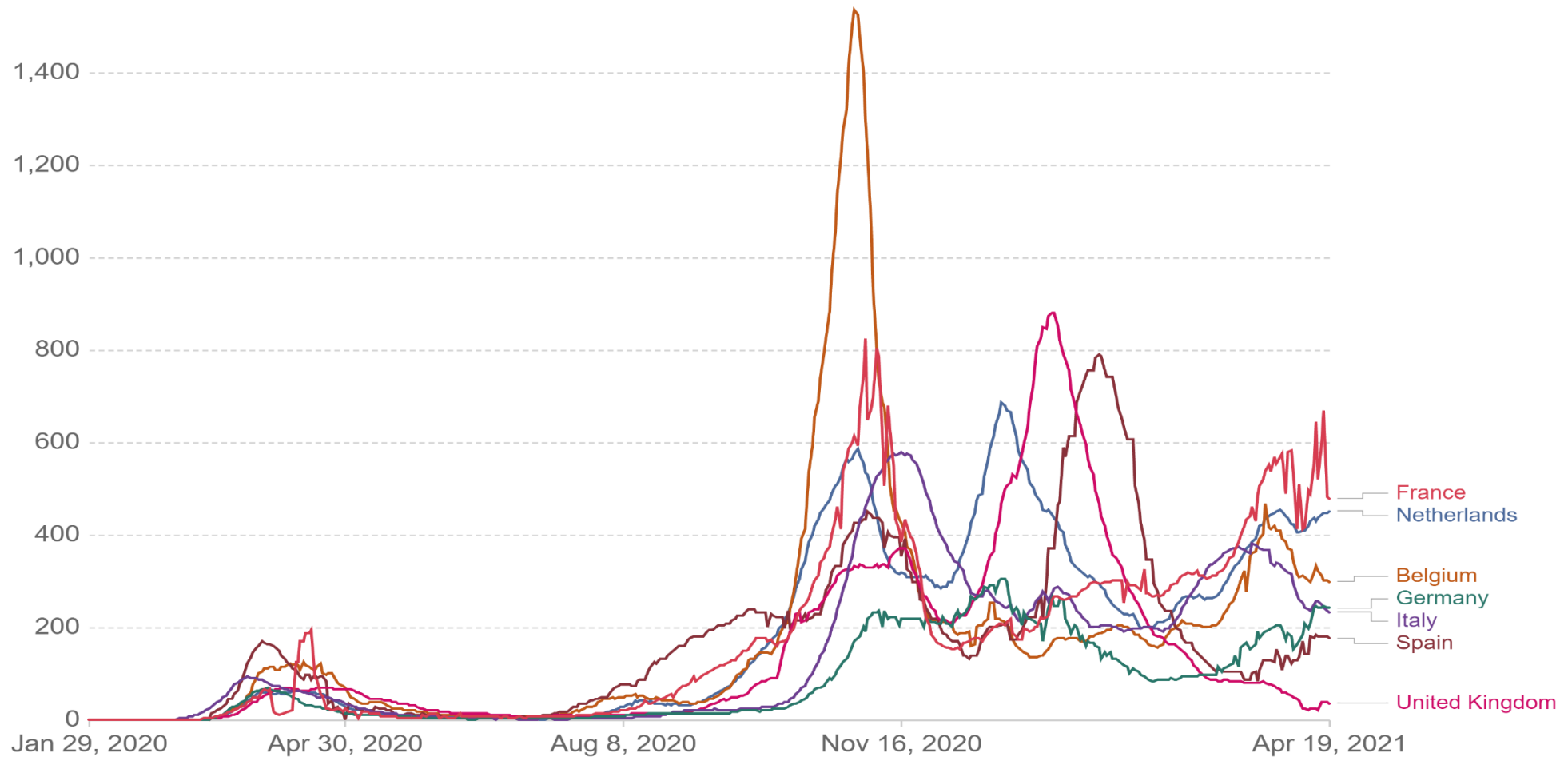
COVID-19 epidemiologisch beeld



Daily new confirmed COVID-19 cases per million people

Shown is the rolling 7-day average. The number of confirmed cases is lower than the number of actual cases; the main reason for that is limited testing.

Our World
in Data



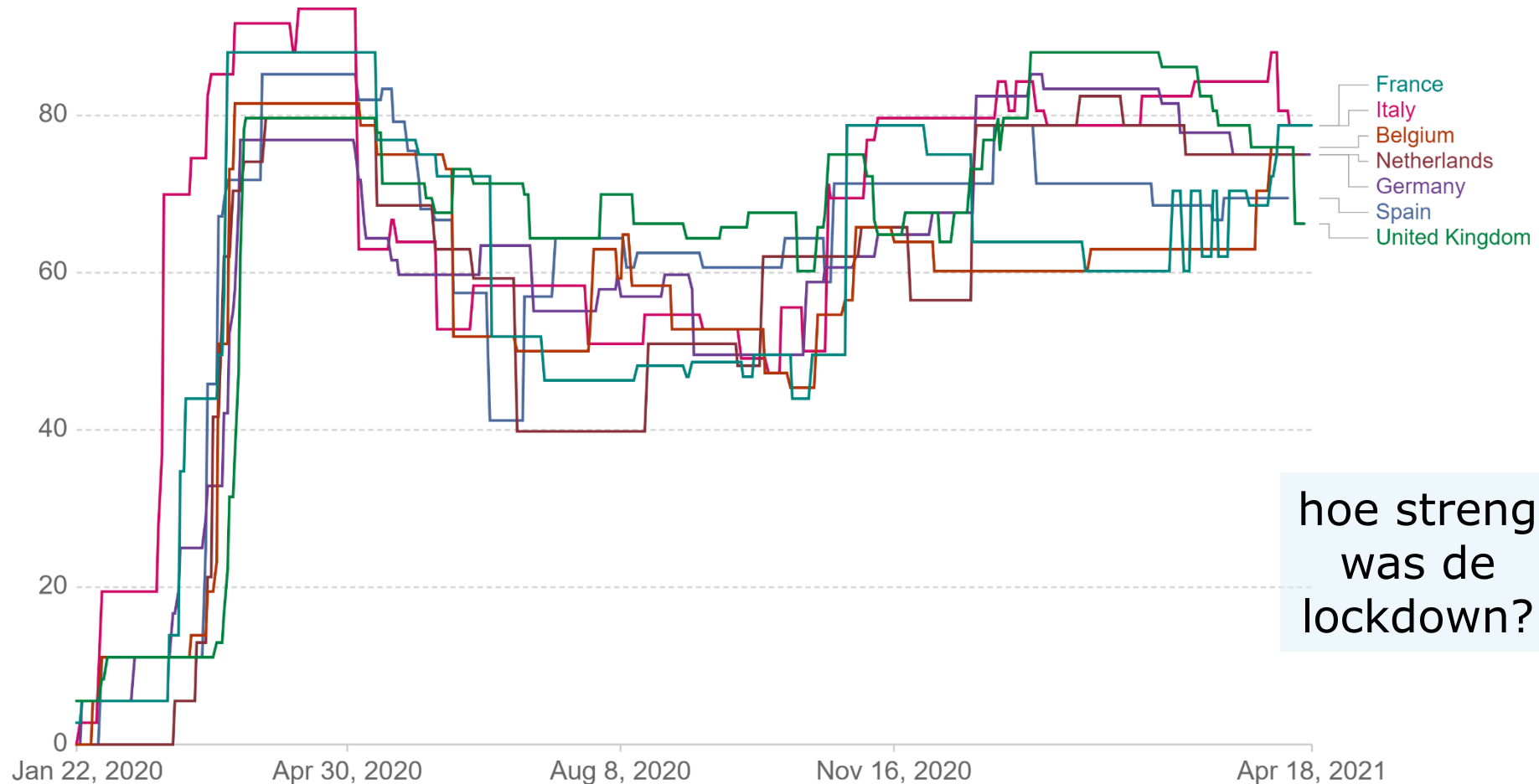
COVID-19 – maatregelen



COVID-19: Stringency Index

This is a composite measure based on nine response indicators including school closures, workplace closures, and travel bans, rescaled to a value from 0 to 100 (100 = strictest). If policies vary at the subnational level, the index is shown as the response level of the strictest sub-region.

Our World
in Data



hoe streng
was de
lockdown?

Source: Hale, Angrist, Goldszmidt, Kira, Petherick, Phillips, Webster, Cameron-Blake, Hallas, Majumdar, and Tatlow (2021). "A global panel database of pandemic policies (Oxford COVID-19 Government Response Tracker)." Nature Human Behaviour. – Last updated 19 April, 15:00 (London time)
OurWorldInData.org/coronavirus • CC BY

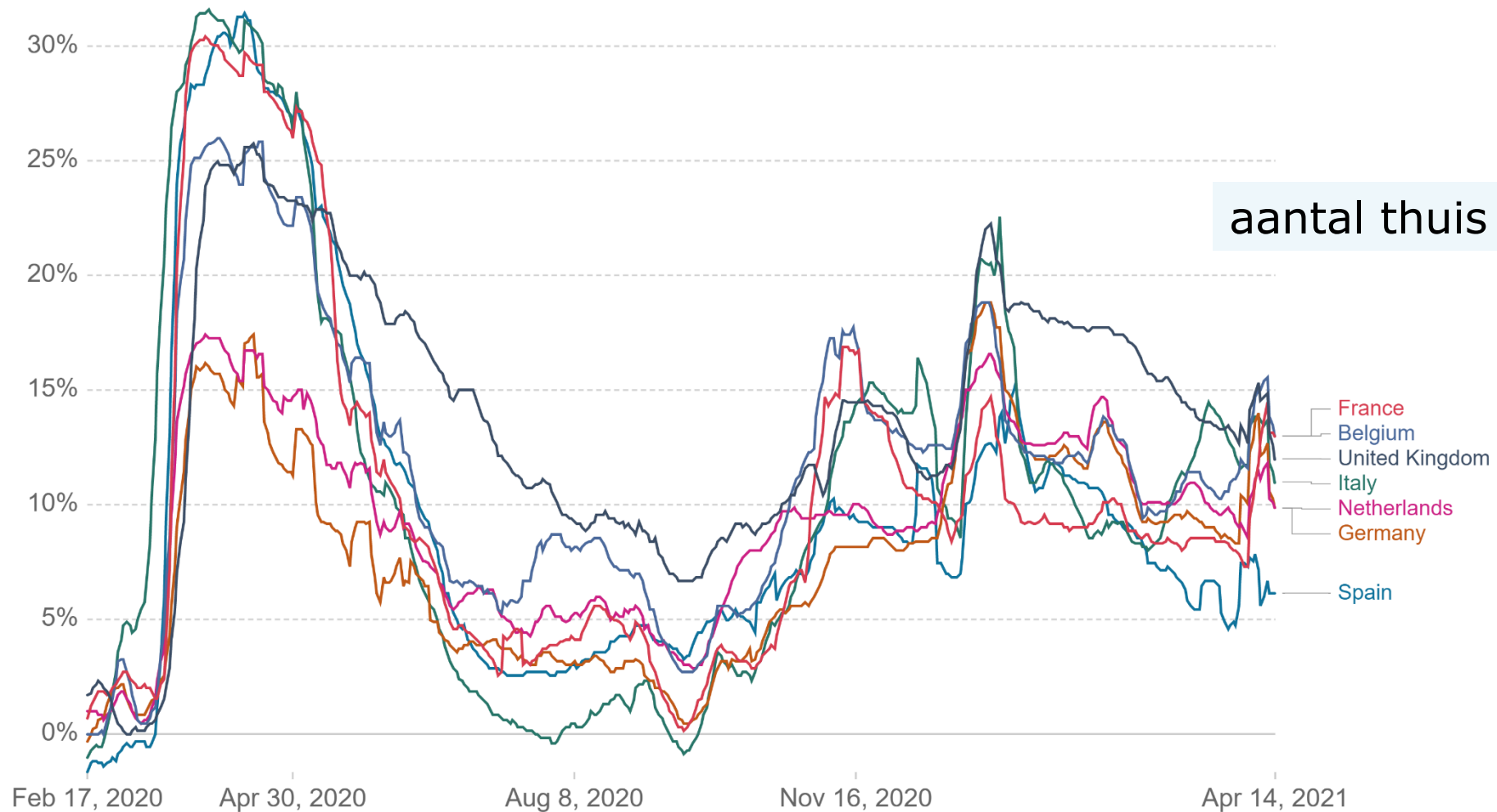
COVID-19 – impact



Residential areas: How did the time spent at home change since the beginning of the pandemic?

Our World
in Data

This data shows how the number of visitors to residential areas has changed relative to the period before the pandemic.



Source: Google COVID-19 Community Mobility Trends – Last updated 19 April, 17:00 (London time)
Note: It's not recommended to compare levels across countries; local differences in categories could be misleading.

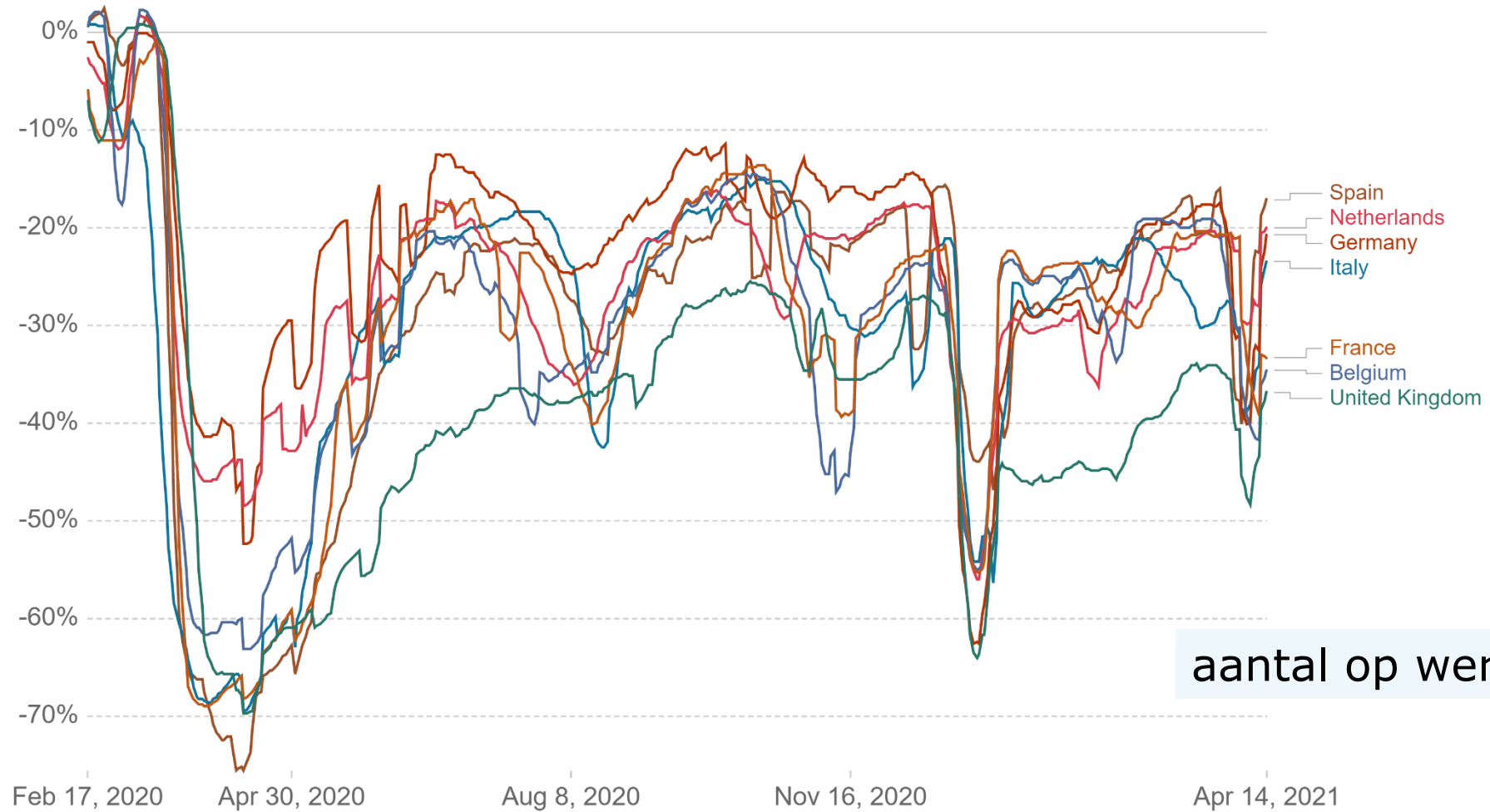
COVID-19 – impact



Workplaces: How did the number of visitors change since the beginning of the pandemic?

Our World
in Data

This data shows how the number of visitors to workplaces has changed relative to the period before the pandemic.



aantal op werk

Source: Google COVID-19 Community Mobility Trends – Last updated 19 April, 17:00 (London time)
Note: It's not recommended to compare levels across countries; local differences in categories could be misleading.

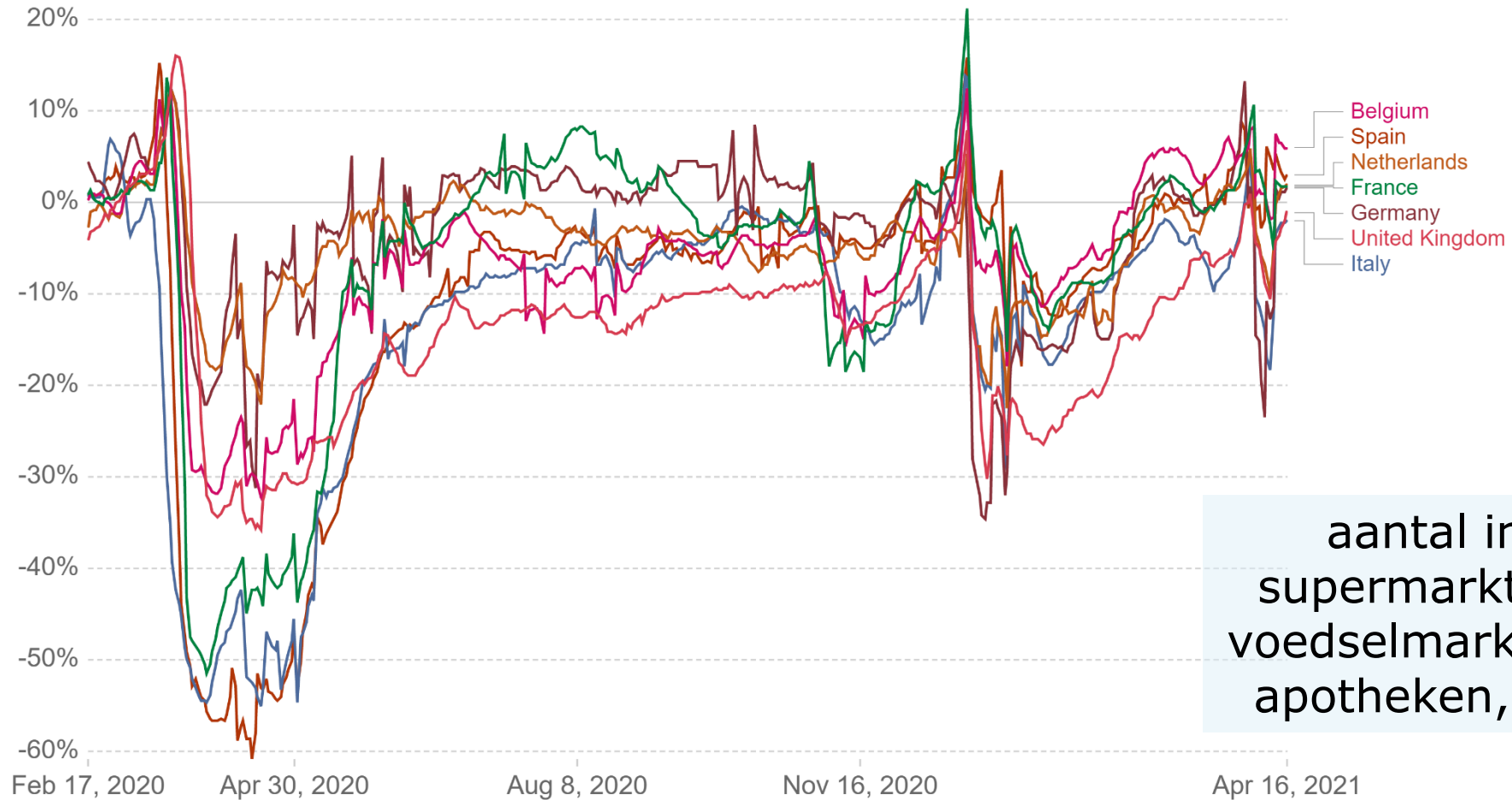
COVID-19 – impact



Grocery and pharmacy stores: How did the number of visitors change since the beginning of the pandemic?

Our World
in Data

This data shows how the number of visitors to grocery and pharmacy stores has changed relative to the period before the pandemic. This includes places like grocery markets, farmers markets, specialty food shops, drug stores, and pharmacies.



aantal in
supermarkten,
voedselmarkten,
apotheken, ed.

Source: Google COVID-19 Community Mobility Trends – Last updated 20 April, 16:09 (London time)
Note: It's not recommended to compare levels across countries; local differences in categories could be misleading.

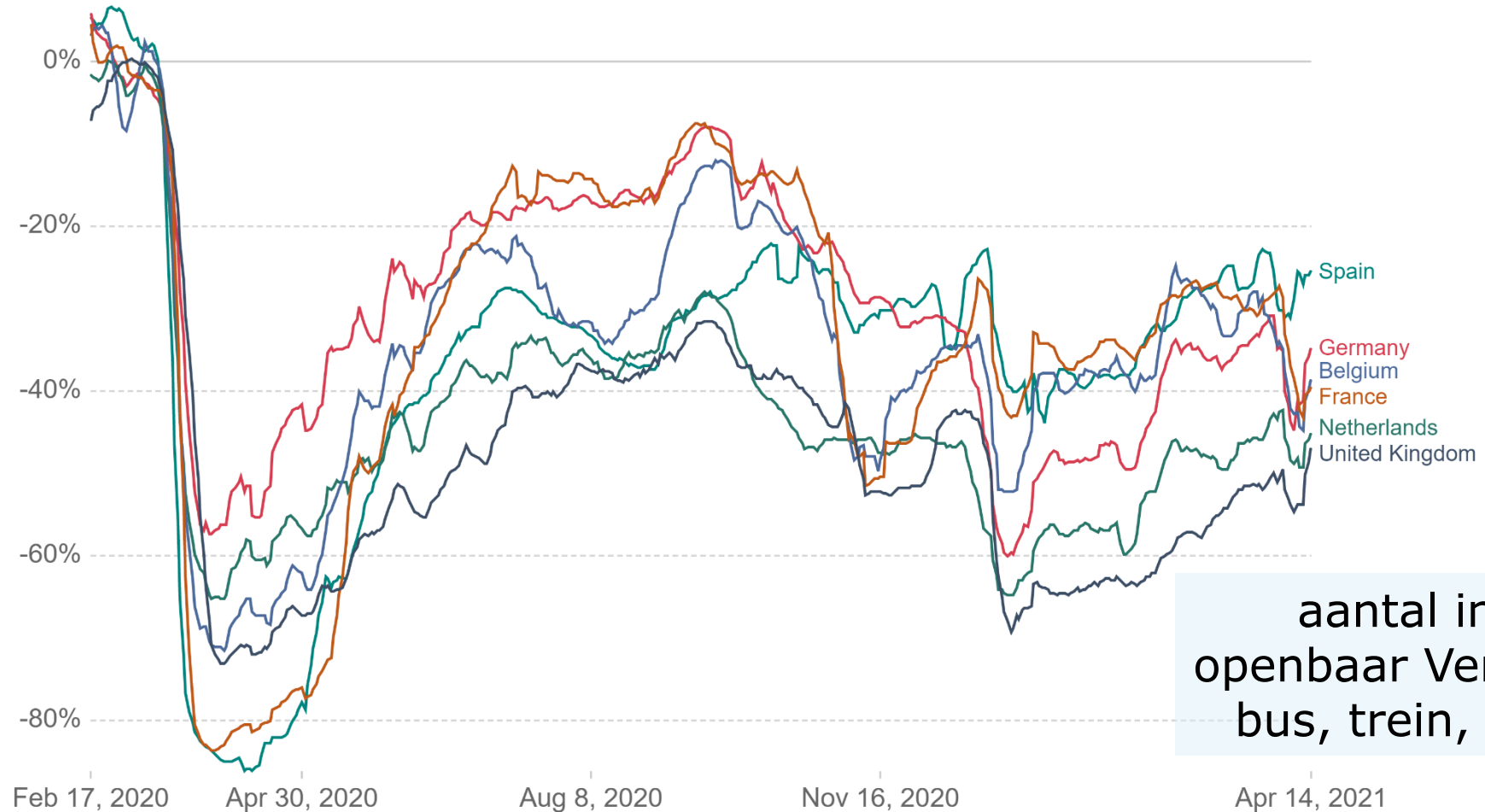
COVID-19 – impact



Transit stations: How did the number of visitors change since the beginning of the pandemic?

Our World in Data

This data shows how the number of visitors to transit stations has changed relative to the period before the pandemic. This includes public transport hubs such as subway, bus, and train stations.



aantal in openbaar Vervoer bus, trein, ed.

Source: Google COVID-19 Community Mobility Trends – Last updated 19 April, 17:00 (London time)
Note: It's not recommended to compare levels across countries; local differences in categories could be misleading.

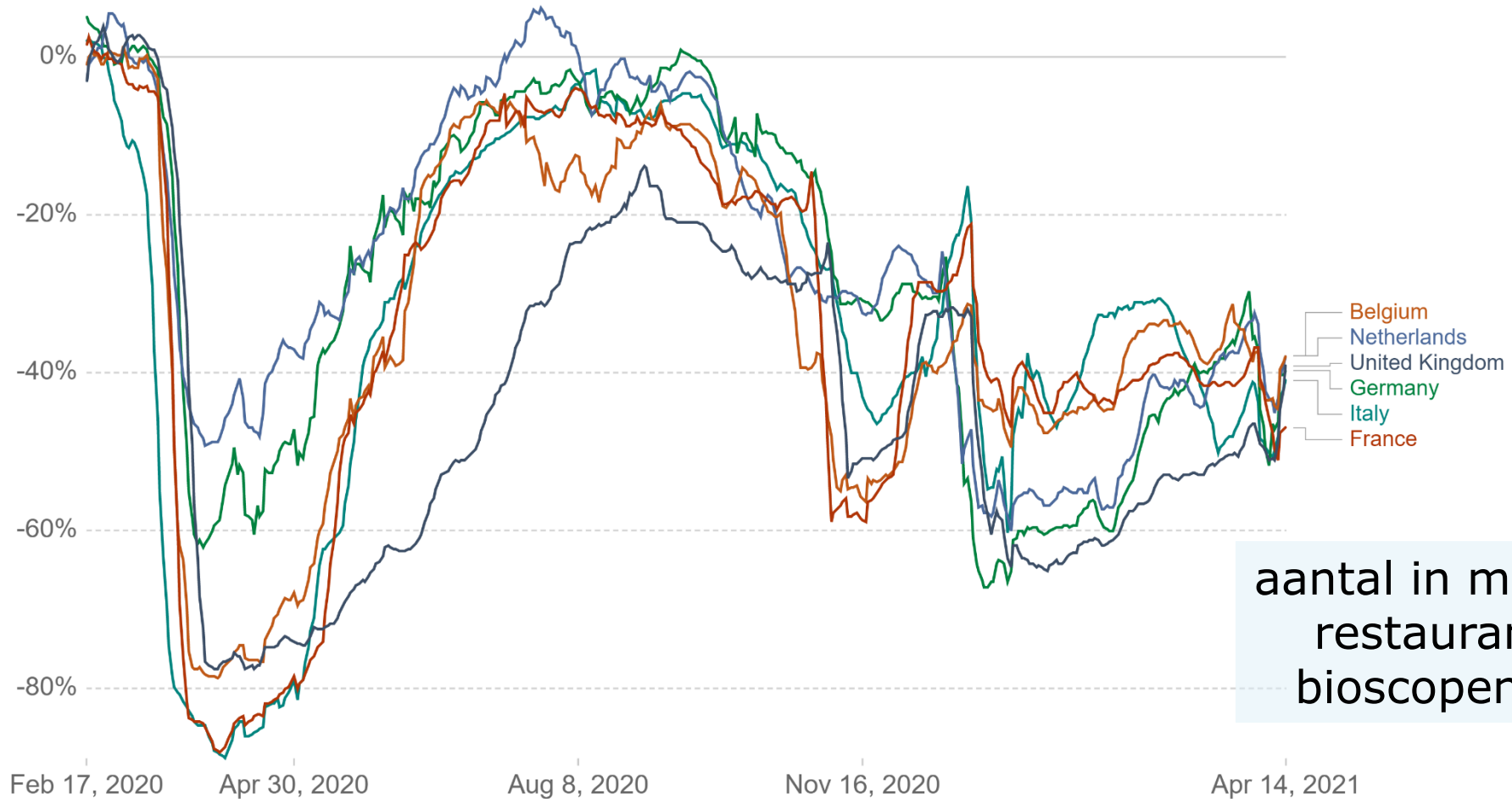
COVID-19 – impact



Retail and recreation: How did the number of visitors change since the beginning of the pandemic?

Our World
in Data

This data shows how the number of visitors to places of retail and recreation has changed relative to the period before the pandemic. This includes places like restaurants, cafés, shopping centers, theme parks, museums, libraries, movie theaters.



aantal in musea,
restaurants,
bioscopen ed.

Source: Google COVID-19 Community Mobility Trends – Last updated 19 April, 17:00 (London time)
Note: It's not recommended to compare levels across countries; local differences in categories could be misleading.

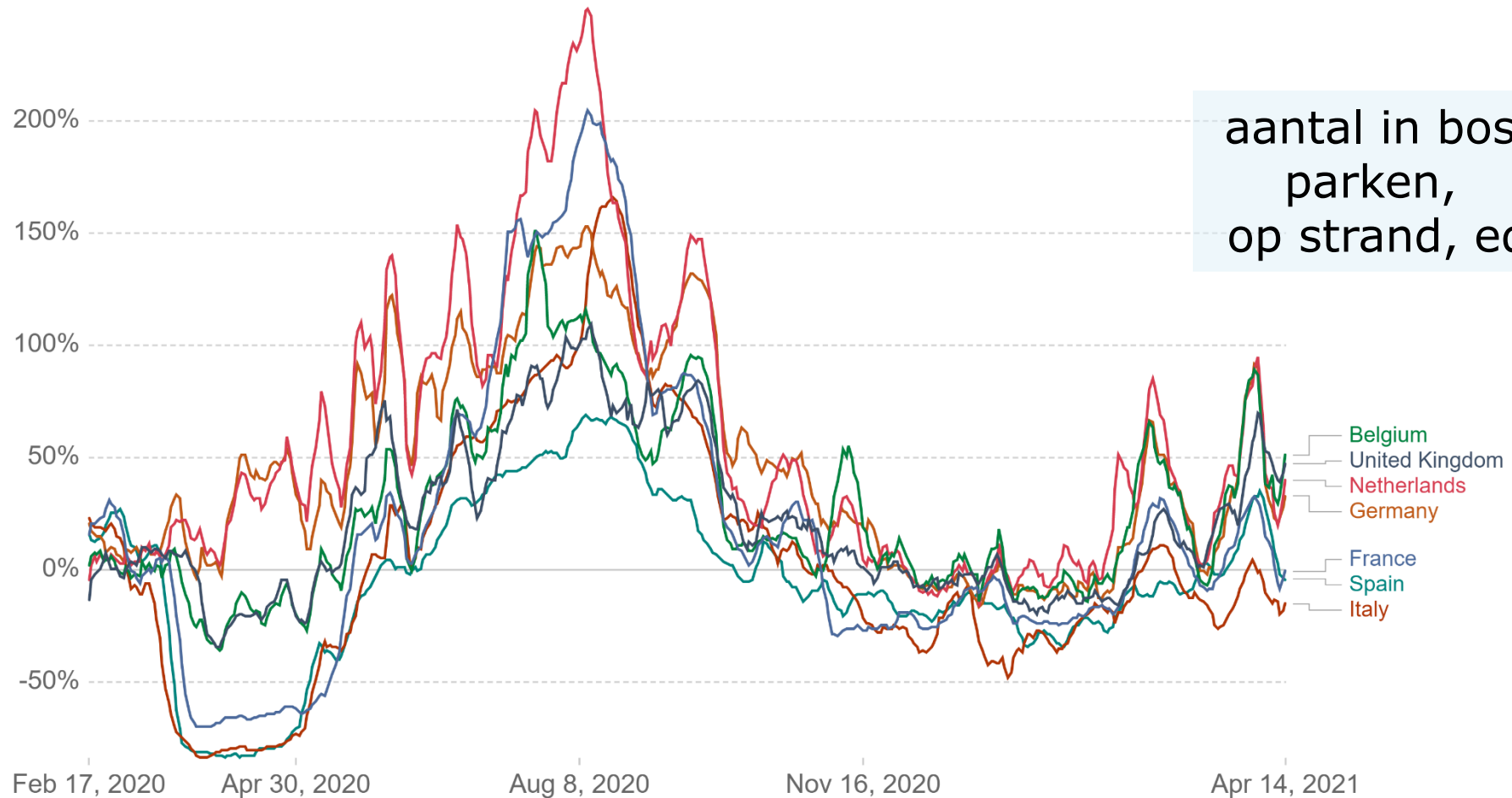
COVID-19 – impact



Our World
in Data

Parks and outdoor spaces: How did the number of visitors change since the beginning of the pandemic?

This data shows how the number of visitors to parks and outdoor spaces has changed relative to the period before the pandemic. This includes places like local parks, national parks, public beaches, marinas, dog parks, plazas, public gardens.



Source: Google COVID-19 Community Mobility Trends – Last updated 19 April, 17:00 (London time)
Note: It's not recommended to compare levels across countries; local differences in categories could be misleading.

OurWorldInData.org/coronavirus • CC BY